



701 Cynthia St, Saskatoon, SK

FOR LEASE OFFICE/RETAIL

Available Space:

Bay 101 Office/Retail 2,026 SF - Possession Immediate

IL1 Zoning

Parcels 118931205,144882894

Agents Protected

Occupancy Costs \$4.60/SF (est)

NET LEASE RATE: \$10.00 SF

Richard Brindley

O: +1 (306) 665-1416 ext 1184

C: +1 (306) 250-9727

E: richard@reddeeproperties.com

www.reddeeproperties.com

Building Features

- Turn Key Professional Office
- Glass store front
- Large amount of natural light
- Showroom, offices and storage areas
- Lunch room
- Double man door
- Multiple recent upgrades including parking lot and facade

Location

- 65,000 daily traffic volume at Avenue C and Circle Drive
- Ample on site Parking
- Many restaurants and amenities nearby



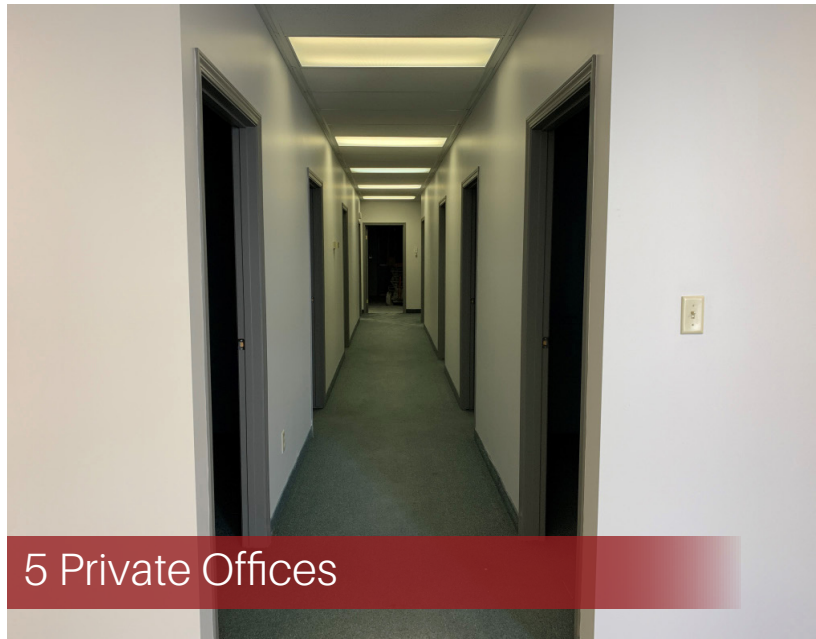
REDDEE PROPERTIES INC.

815 Circle Drive E.
Saskatoon, SK S7K 3S4

FOR LEASE | 701 Cynthia St, Saskatoon



Large Showroom



5 Private Offices



Ample Parking



Versatile Warehouse



Glass Store Front



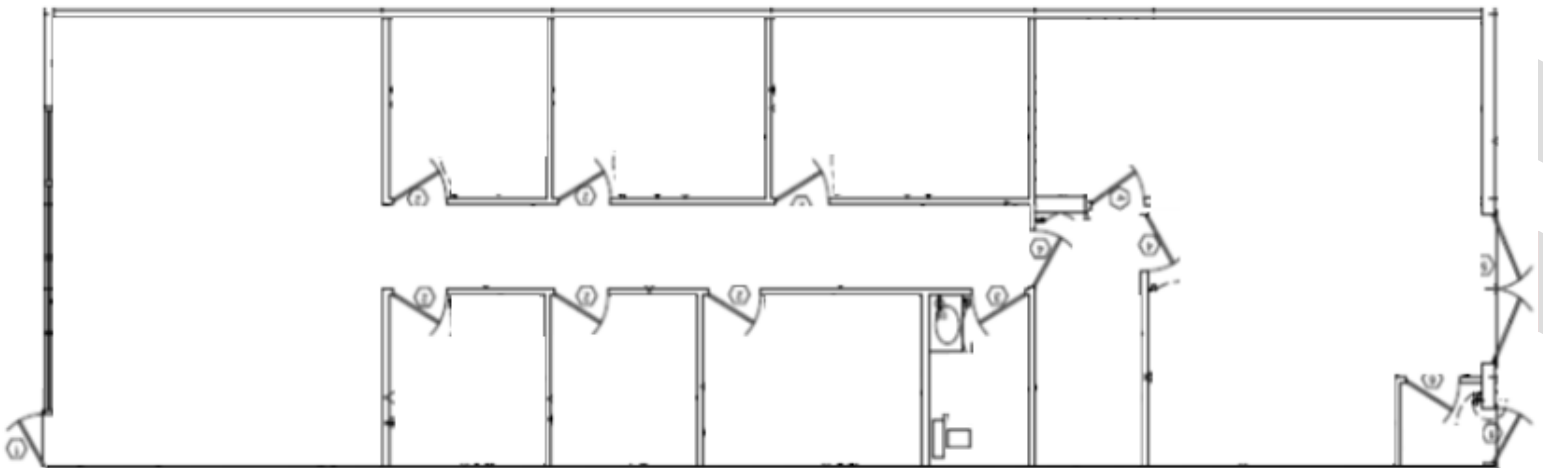
701 Cynthia St

Cynthia St

Avenue C North

Idylwyld Drive North

Circle Drive



SEE MORE AT:

www.reddeeproperties.com/leasing

Richard Brindley

O: +1 (306) 665-1416 ext 1184

C: +1 (306) 250-9727

E: richard@reddeeproperties.com

www.reddeeproperties.com

815 Circle Drive E.
Saskatoon, SK S7K 3S4



REDDEE
PROPERTIES INC.