



216, 1st Avenue South, Saskatoon

FOR LEASE DOWNTOWN RETAIL

Available Space:

Main Floor Retail Space 1,700 SF

B6 Downtown Commercial

Parcels 120161270, 120161281, 120161291

Possession Immediate

Agents Protected

Occupancy Costs \$11.00/SF (est)

NET LEASE RATE:
\$19.00 SF

Richard Brindley

O: +1 (306) 665-1416 ext 1184

C: +1 (306) 250-9727

E: richard@reddeeproperties.com

www.reddeeproperties.com

Building Features:

- Ideal quick service food location
- Zoned for retail/restaurant use
- Stunning glass façade
- On-site building manager
- Complete coverage of natural light
- Landlord will supply signage on building

Location

- Directly opposite Midtown Plaza
- Subsidized parking available
- Located on main artery to River Landing



REDDEE
PROPERTIES INC.

815 Circle Drive E.
Saskatoon, SK S7K 3S4

FOR LEASE | 216 1st Avenue South, Saskatoon



Incredible Architecture



Storage, Prep Areas



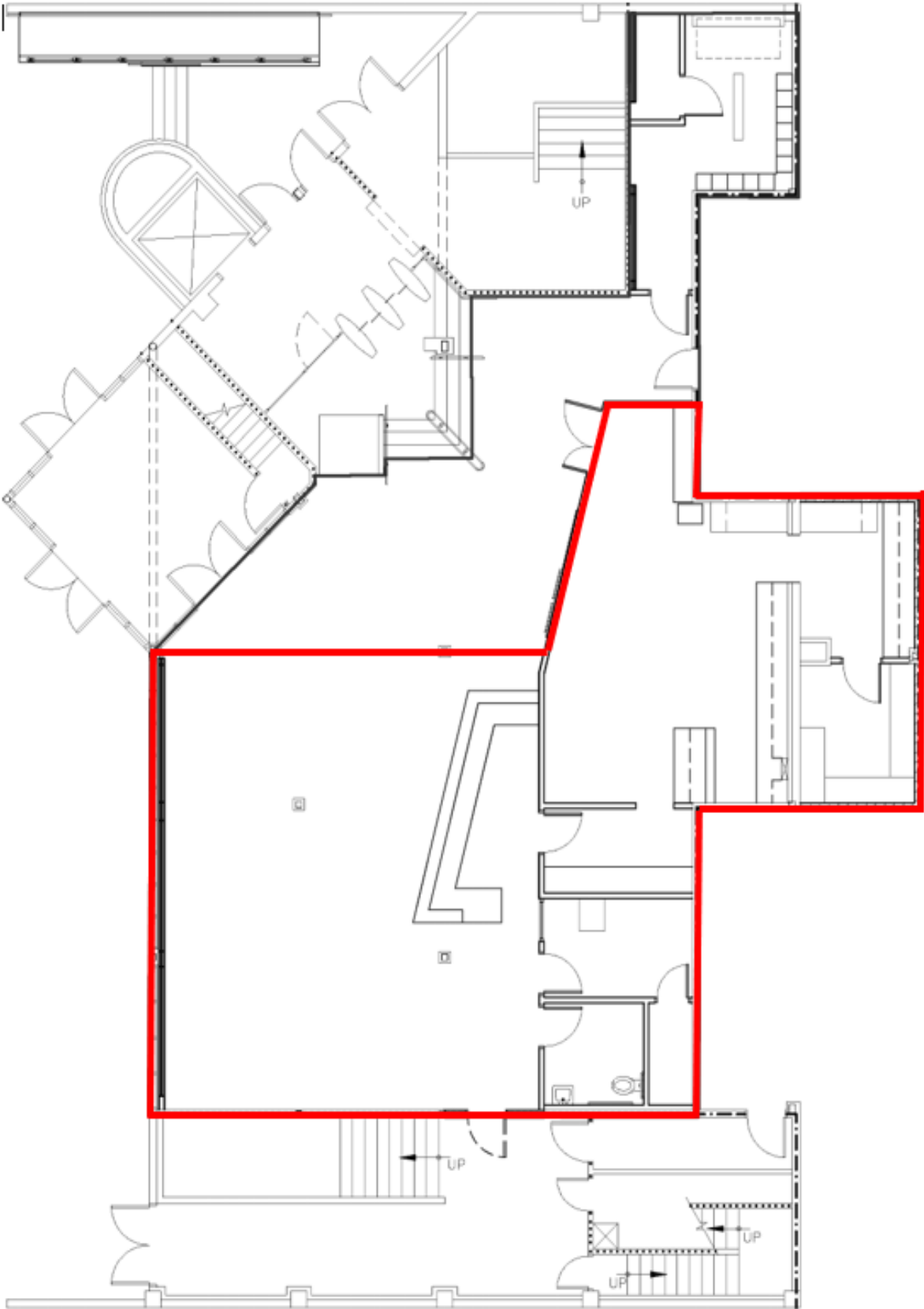
Open Space



Possible Concepts



FOR LEASE | 216 1st Avenue South, Saskatoon





SEE THE VIDEO AT:
www.reddeeproperties.com/leasing

Richard Brindley
 O: +1 (306) 665-1416 ext 1184
 C: +1 (306) 250-9727
 E: richard@reddeeproperties.com
www.reddeeproperties.com
 815 Circle Drive E.
 Saskatoon, SK S7K 3S4



REDDEE
 PROPERTIES INC.